

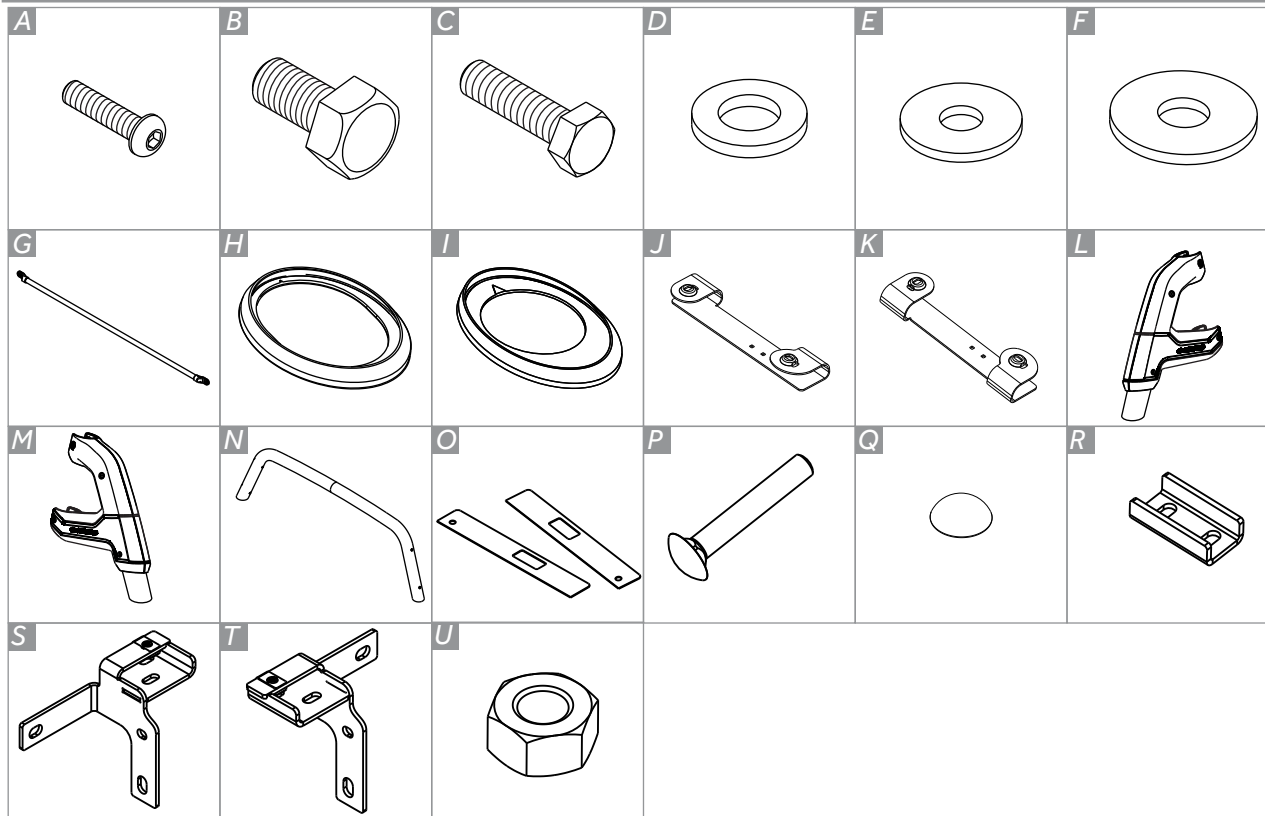


ITEM	QUANTITY	DESCRIPTION
A	02	M6x1,00x25 Int. Hex. Bulg. Head Bolt
B	04	M12x1,25x25 Hex. Bolt
C	10	M8x1,25x30 Hex. Bolt
D	04	M12x2,5x24 Flat Washer
E	02	M6x1,6x14 Flat Washer
F	10	M8x17 Flat Washer
G	01	Window Grille
H	04	Plastic Front Washer
I	02	Plastic Rear Washer
J	01	Right Bracket
K	01	Left Bracket
L	01	Right Side Cover Set
M	01	Left Side Cover Set
N	01	Front Contour
O	02	Right / Left Foam Tape
P	04	Bolt French. M8x50x1.25 RT GPR
Q	02	Plastic Screw Cover
R	02	Rear Mounting Bracket
S	01	Support right side
T	01	Left side support
U	04	Tuerca M8 X 1,25

K031PR  
K031CR

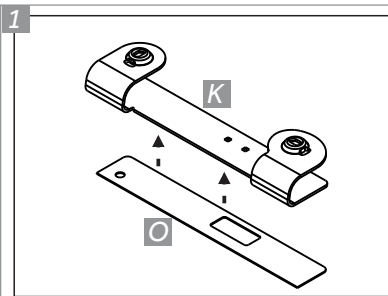
## K3 Light Bar | Ranger 24

### PARTS INCLUDED

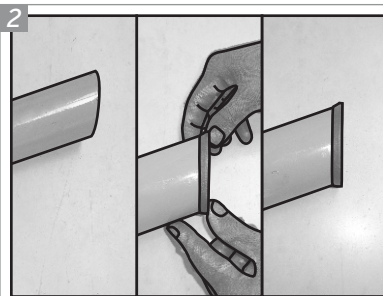


### TOOLS





1 Remove liner foam strips "O", glue to "K" right base in the region of contact with the bed. Repeat the procedure for the "J" left base

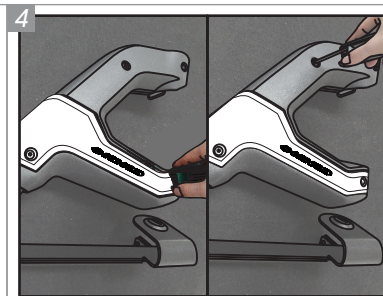


2 Position one "L" Plastic Rear Washer on the tube extremity of the "O" Right Side Cover Set. Repeat for the "P" Left Side Cover Set.

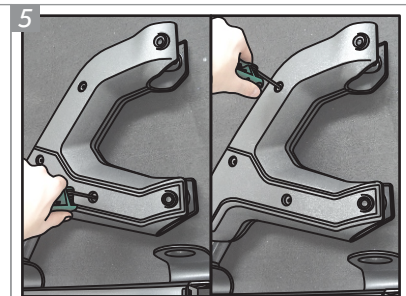


3 With the aid of a "B" Bolt and an "F" Washer, fix the "O" Right Side Cover Set to the "M" Right Bracket. Repeat the procedure for the left side. Do not give the final grip.

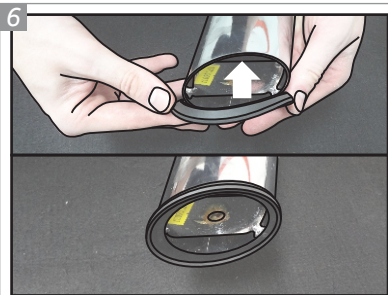
**IMPORTANT: If the mounting of the Contour to the Base it's not possible, follow the aid steps. Then, return to step 4 and proceed.**



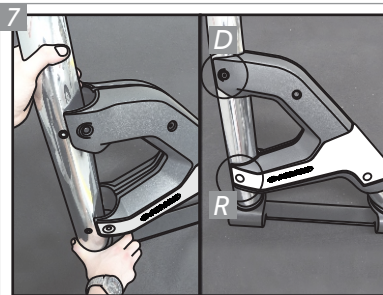
4 Separate the "O" Right Side Cover Set. Loosen the bolts that fix the outer cover. Repeat it for the "P" Left Side Cover Set.



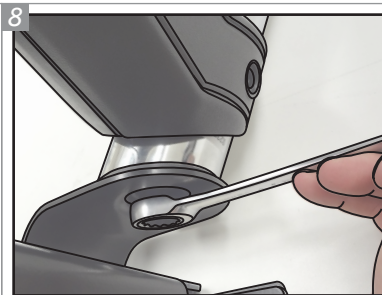
5 Loosen the bolts that fix the inner cover of the "O" and "P" Side Cover Sets.



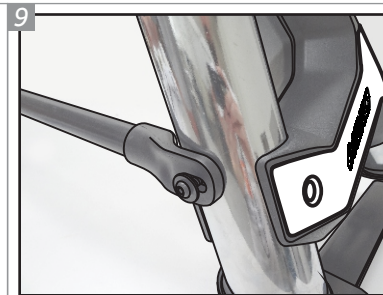
6 Position the "K" Plastic Front Washers on the extremities of the "Q" Front Contour.



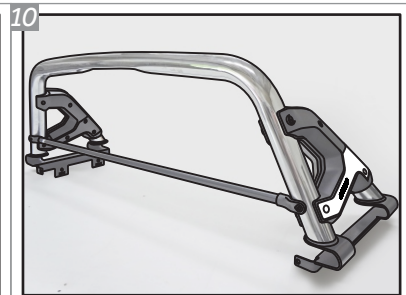
7 Fit the "Q" Front Contour on the "O" and "P" Side Cover Sets and fix them with the aid of Bolts "D" at the top and bottom, but use Bolts "R" at the bottom of the outer cover.



8 For the fixation of the Front Contour to the Side Cover Sets bases, use "B" Bolts and "F" Washers, without giving the final grip.

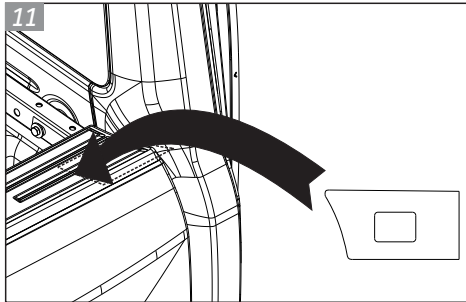


9 Position the "J" Window Grille, with the extremitys on the corresponding holes, on the Front Contour, fixing it with "A" Bolts and "G" Washers.

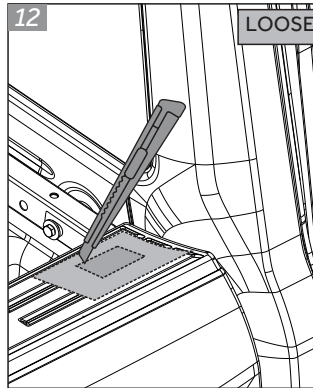


10 Your K3 Light Bar should be as in the image above. Place the accessory in the vehicle and adjust the bases on the bed and give grip to the previously loosen fixations.

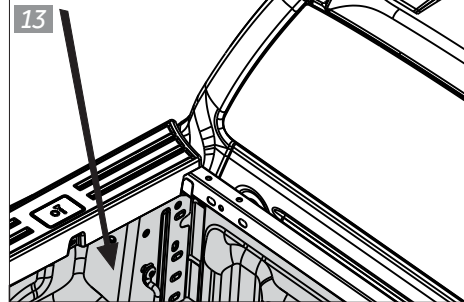
MARK AND CROP, TEMPLATE ATTACHED



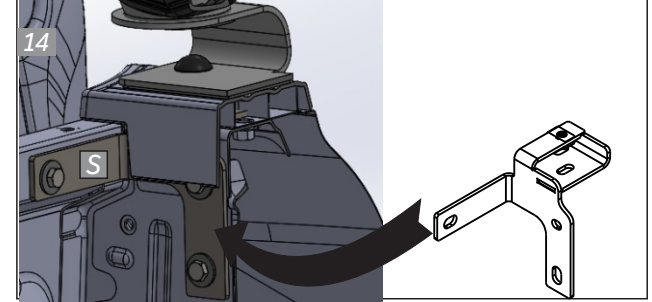
12



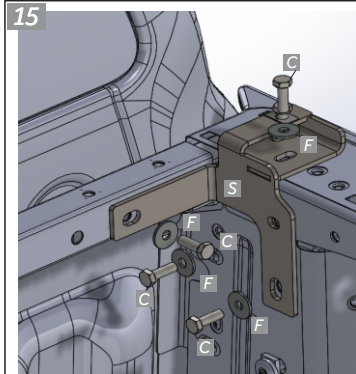
LOOSEN THE PLASTIC PROTECTIVE FINISH OF THE TRUCK



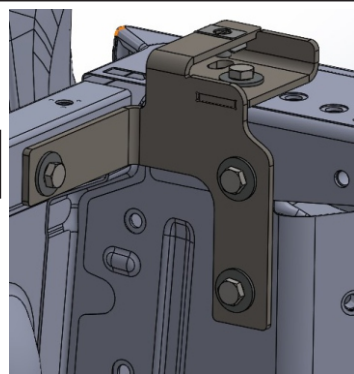
PASS METAL SUPPORT UNDER THE PLASTIC FINISH



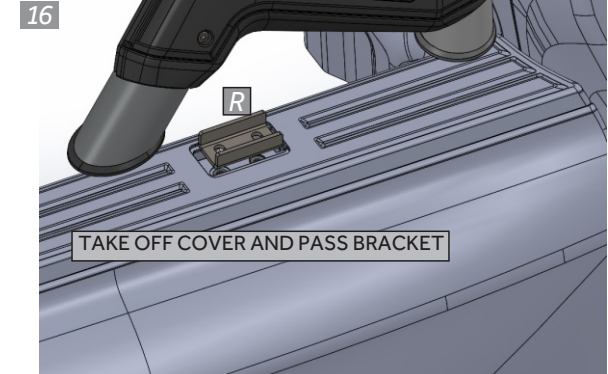
15



Assemble S and T support using for fixing the screws C and F washers.

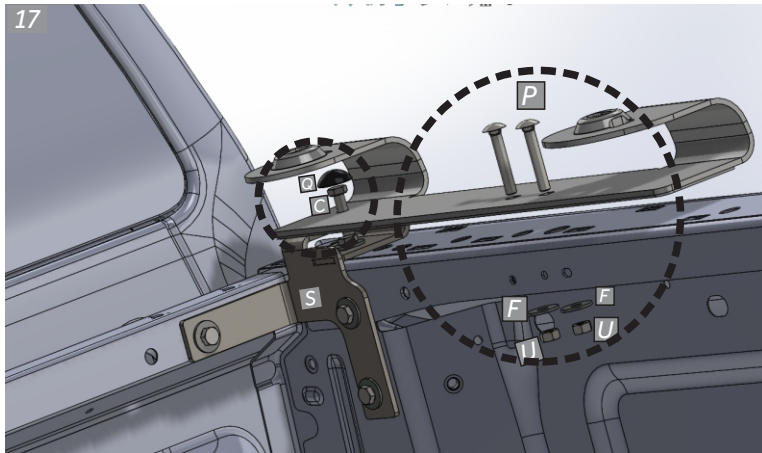


16



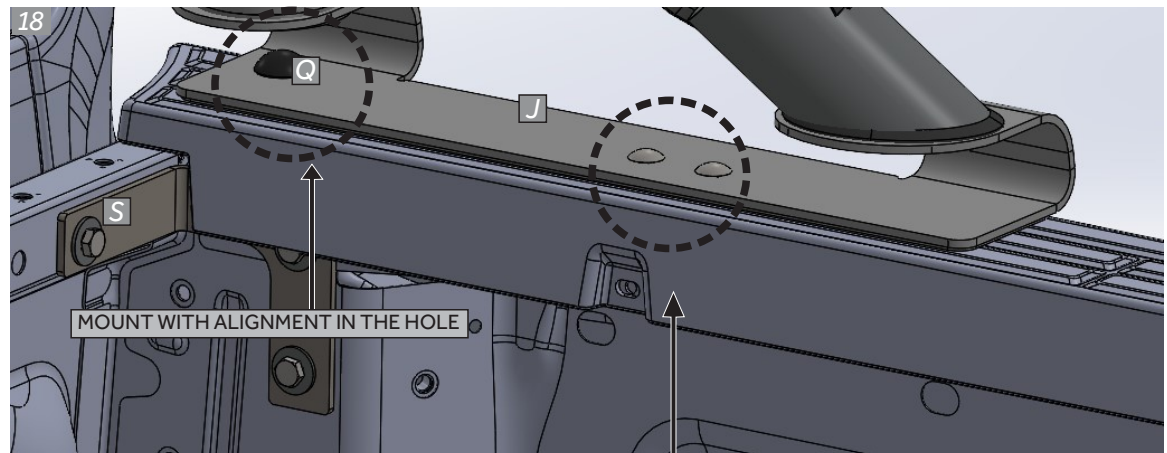
TAKE OFF COVER AND PASS BRACKET

17



ASSEMBLE COMPONENTS FROM THE BOTTOM

18



MOUNT WITH ALIGNMENT IN THE HOLE

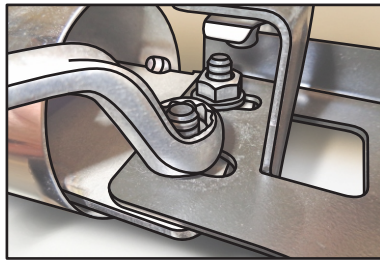
ALIGN THE BASE SO THAT THE BASE DRILLING FITS WITH THE DRILLING

1A AID STEPS



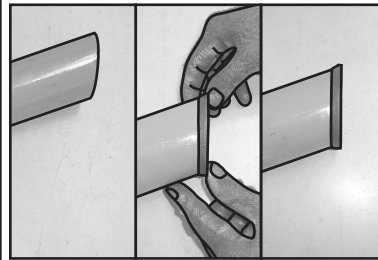
Remove the plastic covers from the "O" Right Side Cover Set.

2A



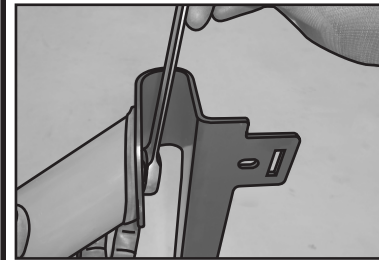
Release the two nuts, with french bolts, that hold the internal structure to the tube, so that you can adjust the tube with the "M" Right Base.

3A



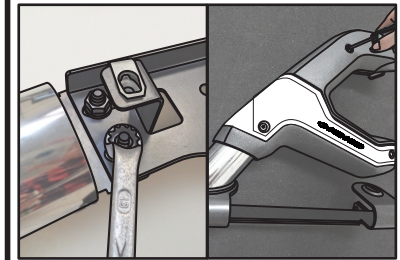
Position one "L" Plastic Rear Washer on the tube extremity of the "O" Right Side Cover Set.

4A



With the aid of a "B" Bolt and an "F" Washer, fix the "O" Right Side Cover Set to the "M" Right Base, without giving final grip.

5A



Give grip to the two nuts, previously released, on the Cover internal structure. Then, reposition the plastic covers with its bolts, without giving final grip. Repeat the steps 1A-5A for the left side.

## WARRANTY CONDITIONS

**Keko Acessórios S.A.** warrants to the original purchaser of Keko's products, for the period of three year, from the date of the purchase, that the product is free from defects in raw material, workmanship or finishing and it is Keko's obligation, under this warranty, to repair or replace, at Keko's election, any part or parts of the product which prove to be defective. This warranty shall not apply to any product which has suffered damage from collision, mishandling, misuse, incorrect cleaning, and incorrect installation or to any product that has been altered from its original conception or had its serial number (available in the product and packaging) removed.

**Maintenance, cleaning and durability:** for cleaning use only water, neutral soap and sponge or flannel. Periodically use automotive wax to conserve the chrome-plated parts. Never use chemicals or abrasive products nott to scratch and expose the product to corrosion.

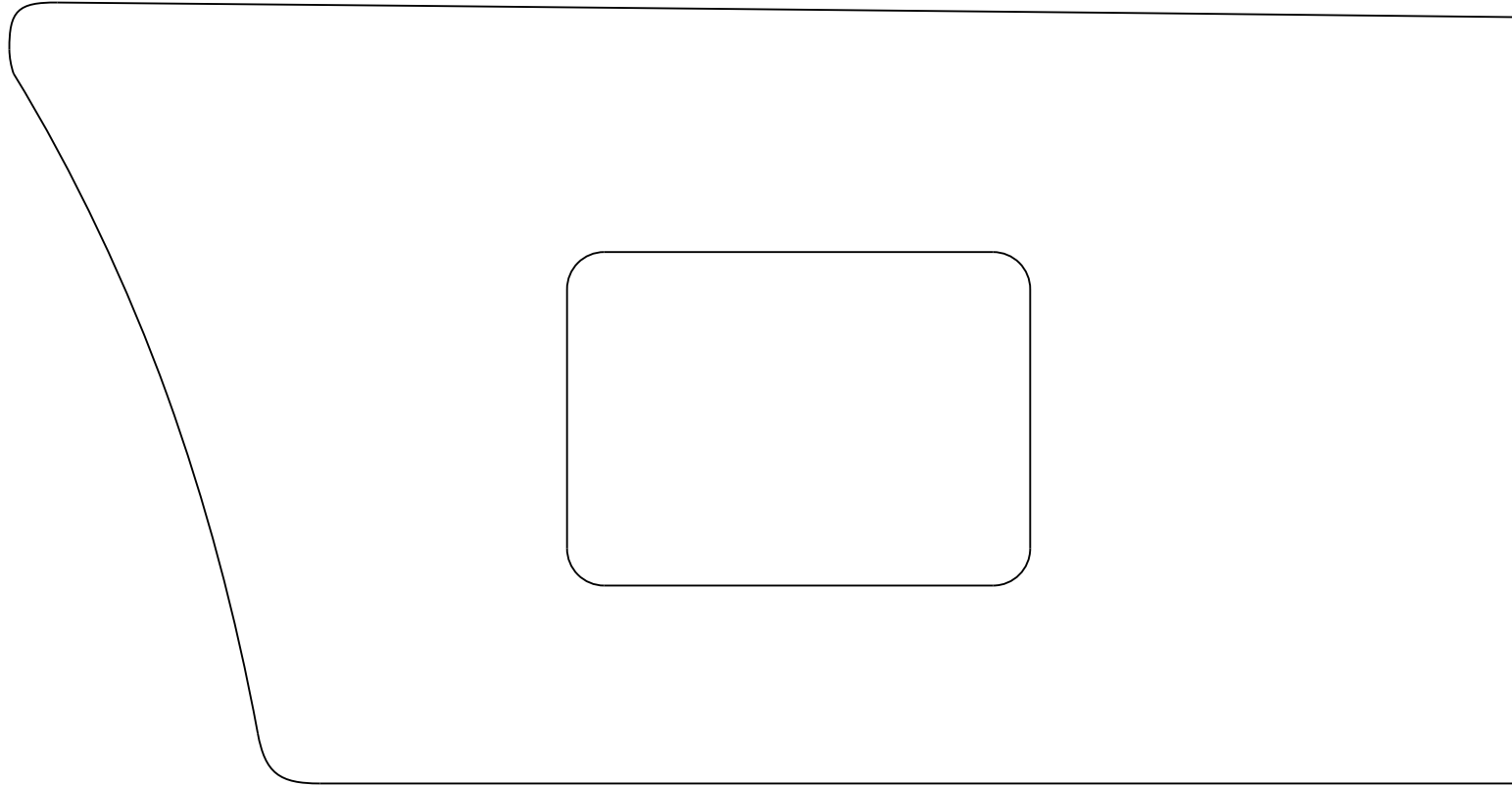
**Warranty Claim:** request the shop where the accessory was purchased to evaluate the defect. If proved to be Keko's liability, the part will be repaired or replaced without charge. The repair or replacement of the parts will not result in extension of the warranty term provided.

**Keko's Liability Term:** Keko does not assume any responsibility for the mishandling or wrong installation of its products. After using the product/packaging we recommend the appropriate destination for each type of material according applicable law.

**Keko's products are merely decorative and do not guarantee the safety of the occupant or vehicle in case of a rollover or other vehicle accident.**



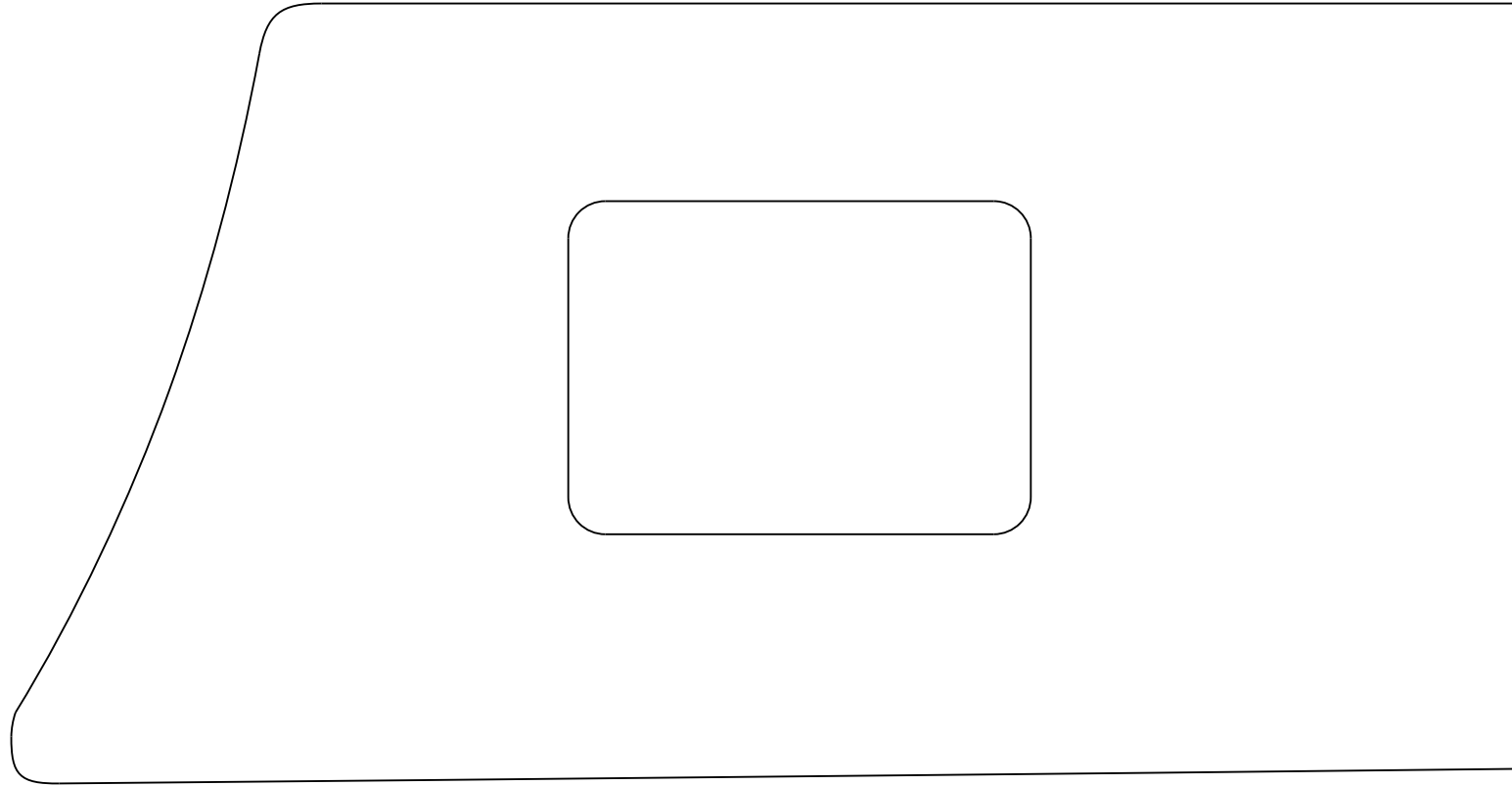
MARK AND CROP, TEMPLATE ATTACHED







MARK AND CROP, TEMPLATE ATTACHED



INSTALLATION DESCRIPTION



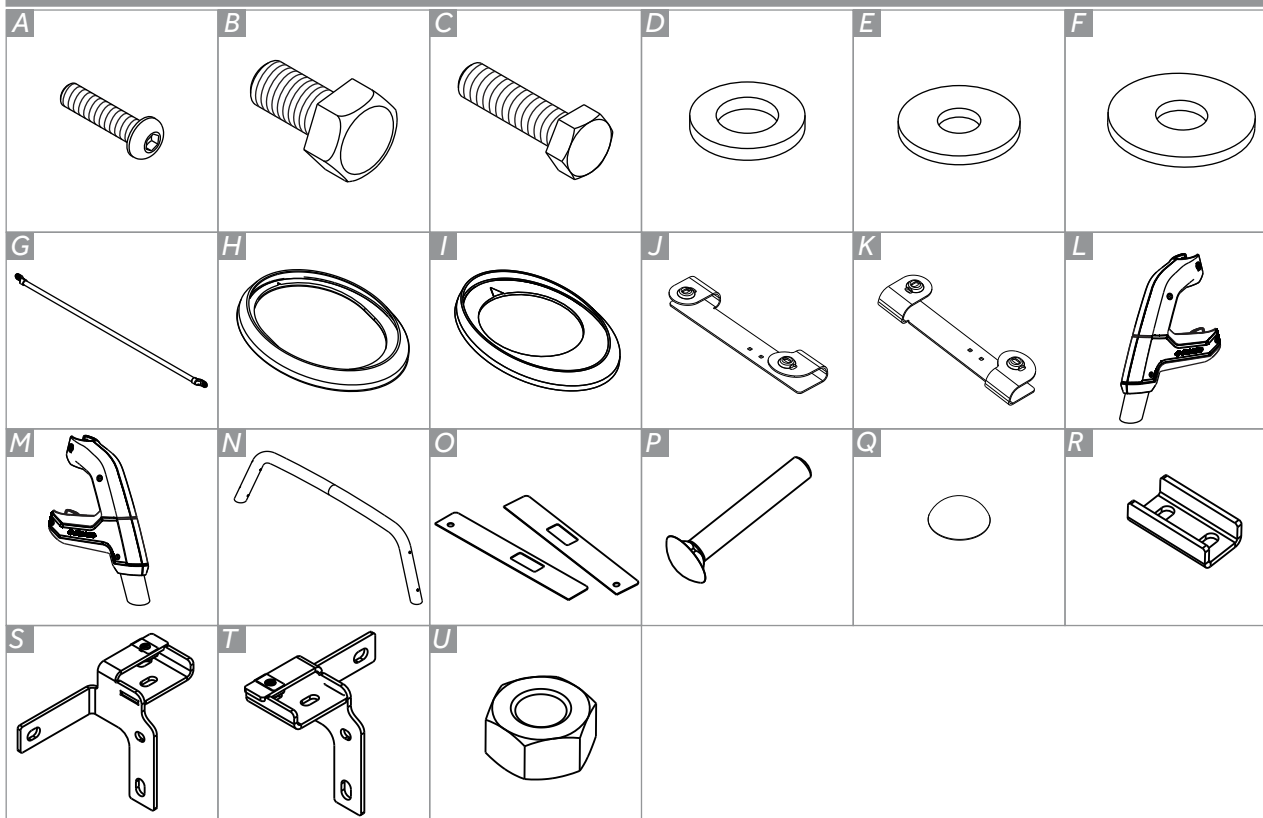


ITEN	CANTIDAD	DESCRIÇÃO
A	02	Torn. Hex. Int. Cab. Com. M6x1,00x25
B	04	Torn. Hex. M12x1,25x25
C	10	Torn. Hex. M8x1,25x30
D	04	Arandela Plana M12x2,5x24
E	02	Arandela Plana M6x1,6x14
F	10	Arandela Plana M8x17
G	01	Barandilla de Vidrio
H	04	Arandela Frontal de Plástico
I	02	Arandela Trasera de Plástico
J	01	Base Derecha
K	01	Base Izquierda
L	01	Conjunto Cubierta Lateral Derecha
M	01	Conjunto Cubierta Lateral Izquierda
N	01	Contorno Delantero
O	02	Cinta de Espuma Derecha/Izquierda
P	04	Tornillo francés M8x50x1.25 RT GPR
Q	02	Acabado: Plástico, cabeza de tornillo
R	02	Soporte de montaje trasero
S	01	Soporte del lado derecho
T	01	Soporte del lado izquierdo
U	04	Tuerca M8 X 1,25

**K031PR**  
**K031CR**

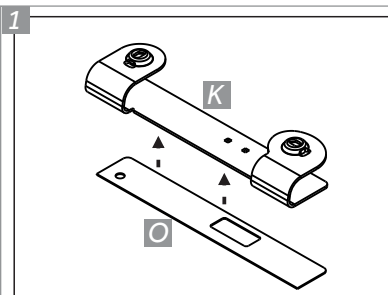
BARRA ANTIVUELCO | Ranger 24

**PRATS INCLUDED**

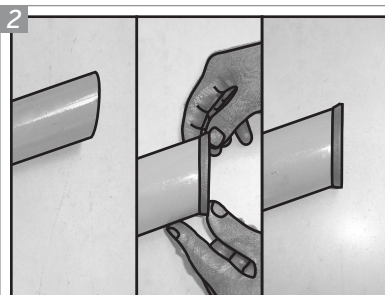


**TOOLS**

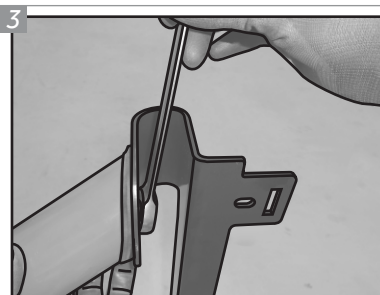




1 Retire el revestimiento de las cintas de espuma "O", pegue a la base derecha "K" en la región de contacto con la caja. Repita el procedimiento para la base izquierda "J".

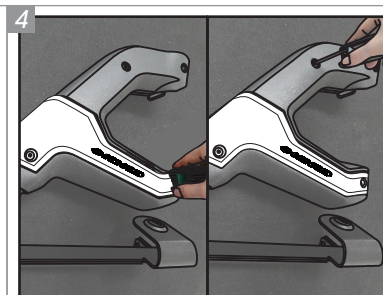


2 Coloque una Arandela Trasera de Plástico "L" en el extremo del Conjunto Cubierta Lateral Derecha "O". Repita para el Conjunto Cubierta Lateral Izquierda "P".

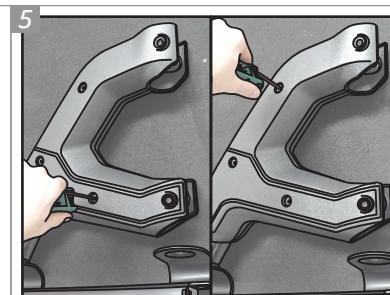


3 Con la ayuda de un Tornillo "B" y una Arandela "F", fije el Conjunto Cubierta Lateral Derecha "O" a la Base Derecha "M". Repita el procedimiento para el lado izquierdo. No dar el apriete final.

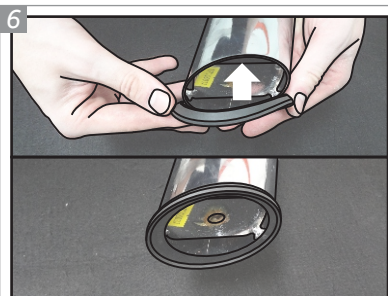
**IMPORTANTE:** Si el montaje del Contorno en la Base no es posible, siga los pasos de ayuda. Luego, regrese al paso 4 y continúe.



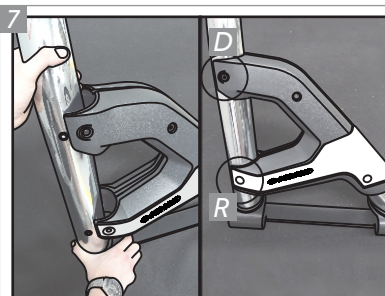
4 Separe el Conjunto Cubierta Lateral Derecha "O". Aflojar los tornillos que prenden la cubierta exterior. Repetir para el Conjunto Cubierta Lateral Izquierda "P".



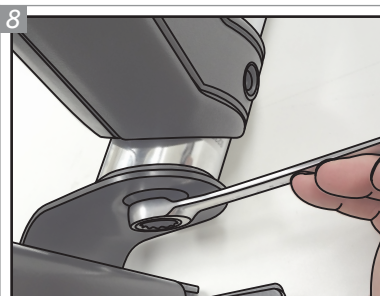
5 Aflojar los tornillos que prenden la cubierta interna de los Conjuntos Cubierta Lateral "O" y "P".



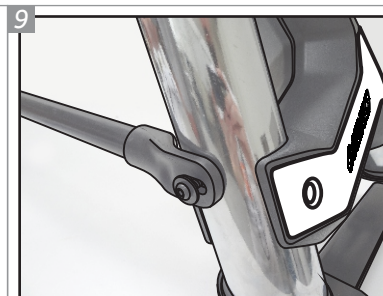
6 Coloque las Arandelas Frontales de Plástico "K" en los extremos del Contorno Delantero "Q".



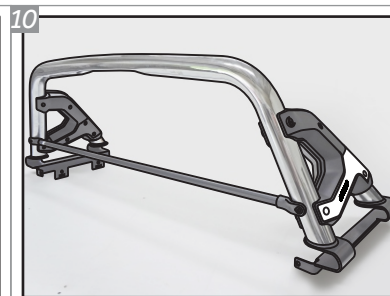
7 Encaje el Contorno Frontal "Q" en los Conjuntos Cubierta Lateral "O" y "P" y fije-los con la ayuda de los Tornillos "D" en la parte superior e inferior, pero use el Tornillo "R" en la parte inferior de la cubierta exterior.



8 Para la fijación del Contorno Delantero a las bases de los Conjuntos Cubierta Lateral, utilizar Tornillos "B" y Arandelas "F", sin dar el apriete final.

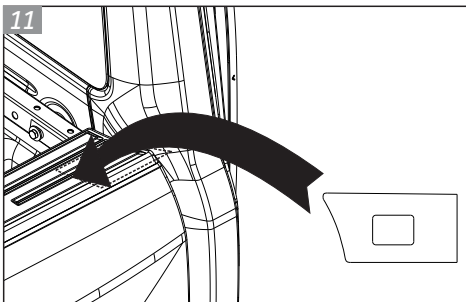


9 Coloque la Barandilla de Vidrio "J", con los extremos en los orificios correspondientes, en el Contorno Delantero, fijando con Tornillos "A" y Arandelas "G".

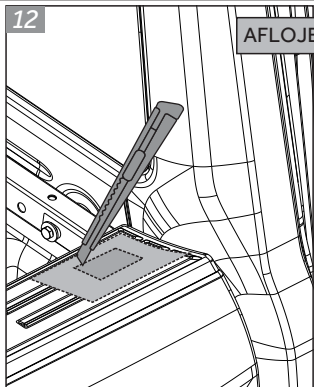


10 Su Barra Antivuelco K3 debe ser como en la imagen de arriba. Colocar el accesorio en el vehículo, ajustar las bases en la caja y dar apriete en las fijaciones previamente aflojadas.

MARCAR Y RECORTAR, PLANTILLA ADJUNTA

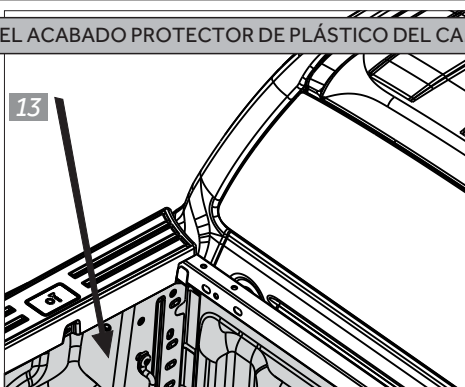


12

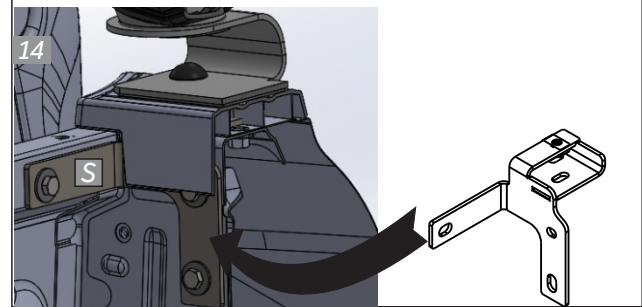


AFLOJE EL ACABADO PROTECTOR DE PLÁSTICO DEL CAMIÓN

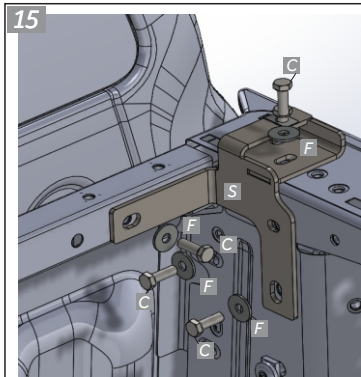
13



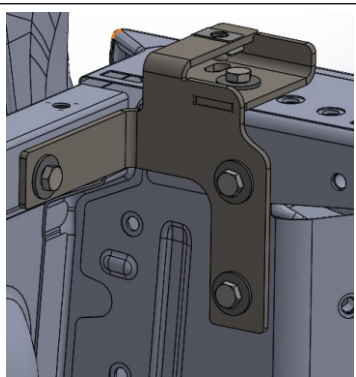
PASE EL SOPORTE METÁLICO DEBAJO DEL ACABADO PLÁSTICO



15



Ensamble el soporte S y T usando para fijar los tornillos C y arandelas F

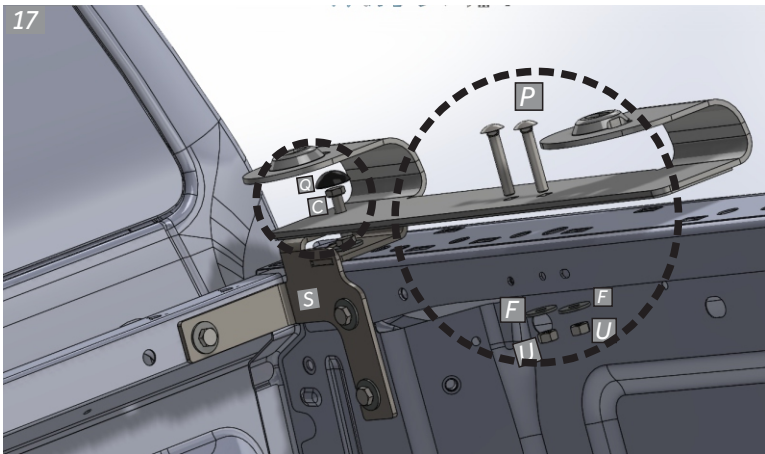


16



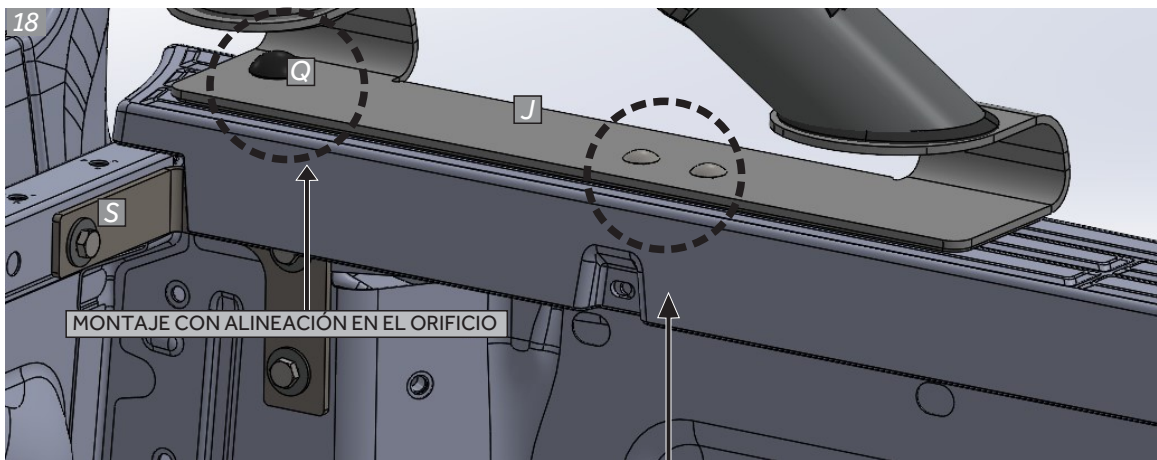
RETIRE LA PIEZA DE PLÁSTICO Y PASE EL SOPORTE

17



ENSAMBLAR COMPONENTES DESDE LA PARTE INFERIOR

18



MONTAJE CON ALINEACIÓN EN EL ORIFICIO

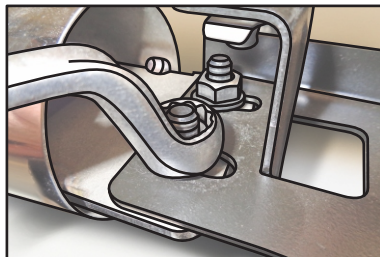
ALINEE LA BASE PARA QUE LA PERFORACIÓN DE LA BASE ENCAJE CON LA PERFORACIÓN

## 1A PASOS DE AYUDA



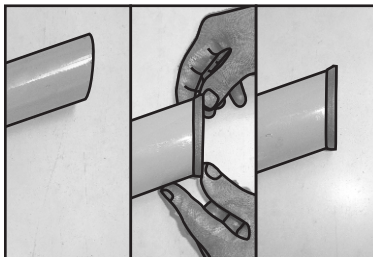
Quite las cubiertas de plástico del Conjunto Cubierta Lateral Derecho "O".

## 2A



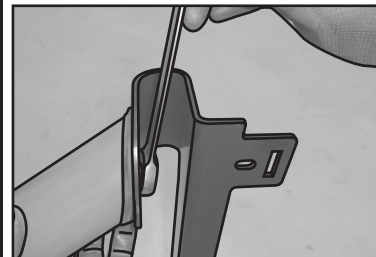
Suelte las dos tuercas, con tornillos franceses, que sujetan la estructura interna al tubo, para que pueda ajustar el tubo con la Base Derecha "M".

## 3A



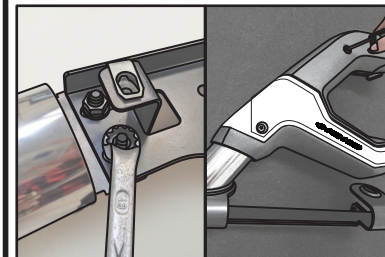
Posicione una Arandela Trasera de Plástico "L" en lo extremo del tubo del Conjunto Cubierta Lateral Derecha "O".

## 4A



Con la ayuda de un Tornillo "B" y una Arandela "F", fije el Conjunto Cubierta Lateral Derecha "O" a la Base Derecha "M", sin dar el apriete final.

## 5A



Dé apriete a las dos tuercas, sueltas anteriormente, en la estructura interna de la Cubierta. Después, reposicione las cubiertas de plástico con sus tornillos, sin dar el apriete final. Repita los pasos 1A-5A para el lado izquierdo.

## CONDICIONES DE GARANTÍA

**Keko Accesorios S.A.** le concede al comprador original de los productos Keko garantía de tres años a partir de la fecha de compra original por defecto de fabricación en la materia prima, mano de obra o terminación, en servicio o durante el uso normal, siempre que debidamente comprobados. Se excluyen de la garantía los daños ocasionados por colisión, uso indebido del producto como exceso de carga, limpieza incorrecta, instalación inadecuada, alteración de la concepción original del producto o cuando se haya retirado el número de serie (disponible en el producto y en el empaque) de fabricación.

**Conservación, limpieza y durabilidad:** para limpieza, utilizar solamente agua, jabón neutro, esponja o franela. Para la conservación de productos con terminación cromo, utilizar periódicamente cera para automóviles. Nunca utilizar productos químicos o abrasivos, dado que sus componentes atacan la terminación y exponen los productos con terminación de cromo a la corrosión, perjudicando los productos de plástico.

**Solicitud de la garantía:** solicitar la evaluación del problema en el establecimiento donde se efectuó la compra. En caso de reclamación procedente, se cambiará la pieza sin cargo para el propietario. La reparación o cambio de las partes del equipo no representa prolongación de su plazo de garantía original.

**Término de responsabilidad de los productos Keko:** Keko no asume ninguna responsabilidad en virtud de cualquier tipo de avería que resulte de mala utilización/instalación de sus productos. Después de la utilización del producto/empaque recomendamos el destino apropiado para cada tipo de material, según la legislación aplicable.

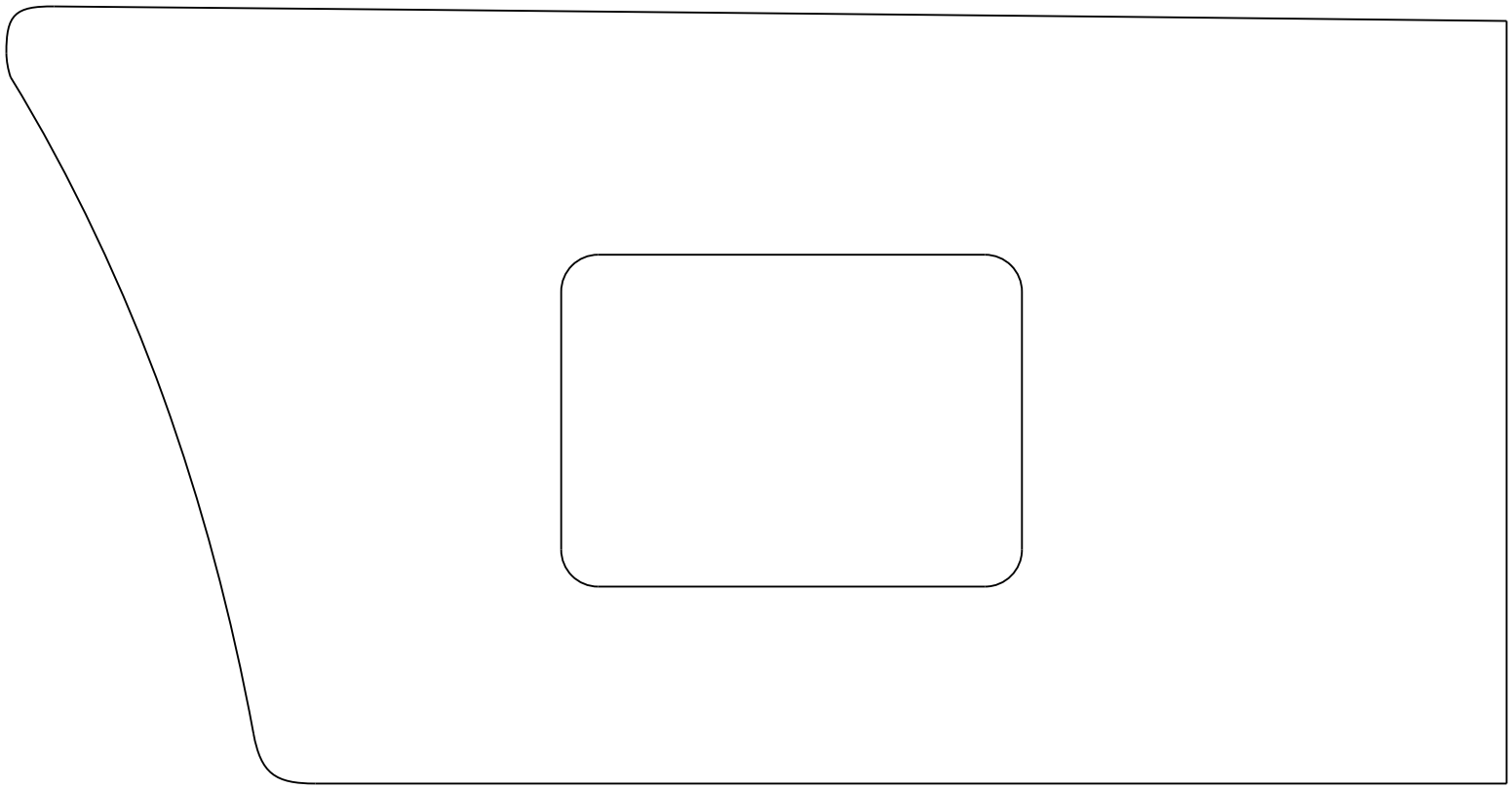
**Los productos Keko se comercializan como accesorios meramente decorativos y no se deben considerar como medida de protección del vehículo o de sus pasajeros en caso de colisión o volcamiento.**





MARCAR Y RECORTAR, PLANTILLA ADJUNTA

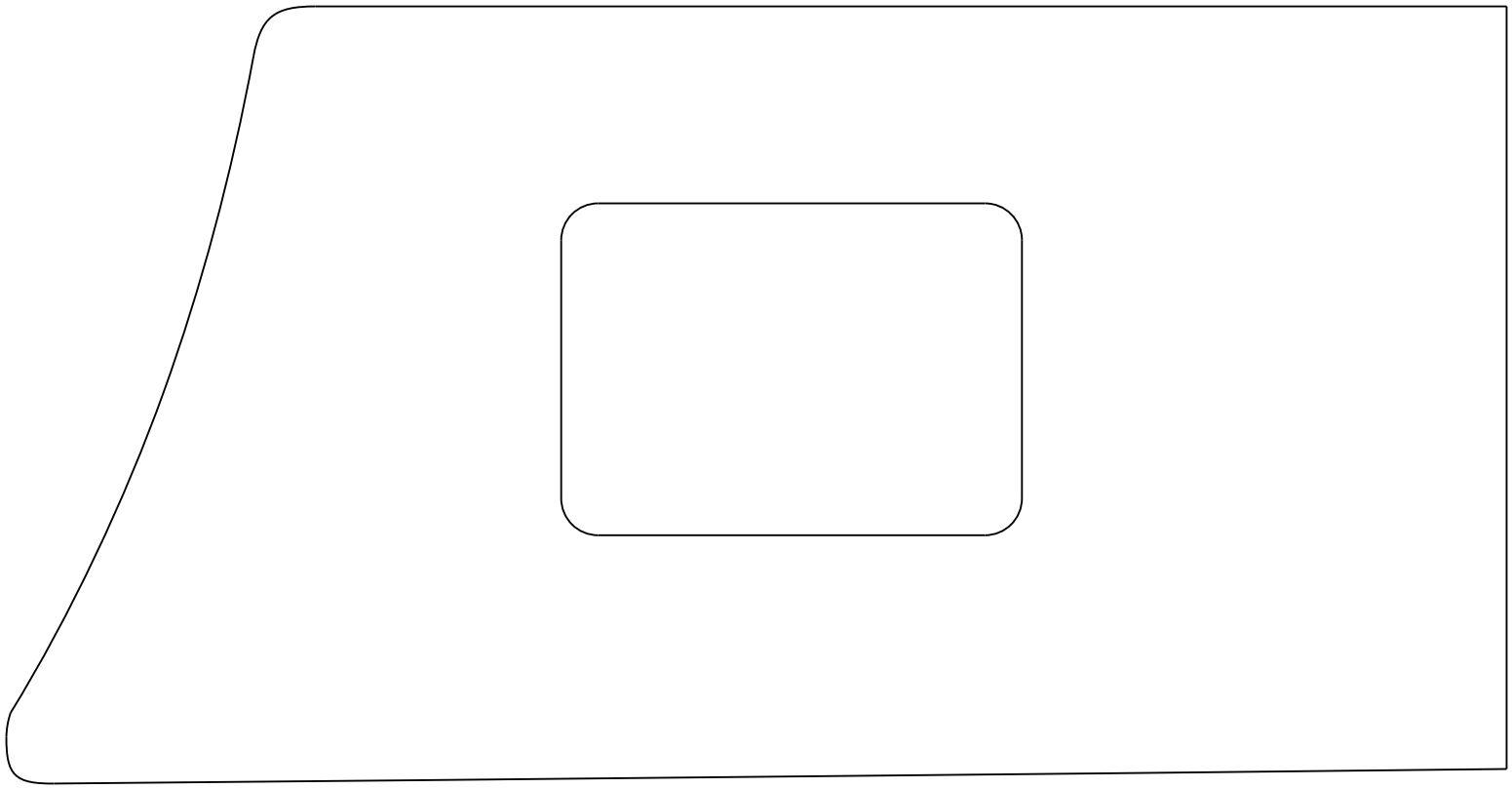
DESCRIPCIÓN DE INSTALACIÓN





MARCAR Y RECORTAR, PLANTILLA ADJUNTA

DESCRIPCIÓN DE INSTALACIÓN





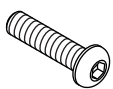
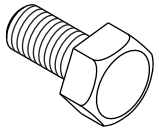
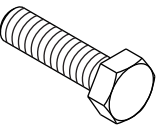
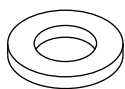
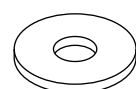
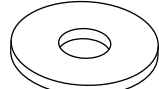
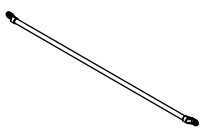
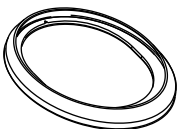
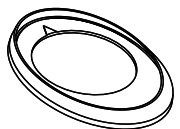
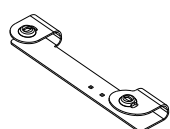
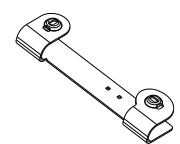


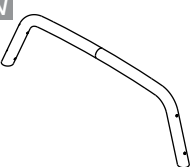
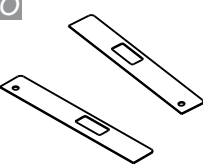
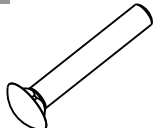
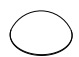
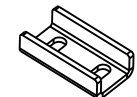
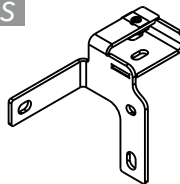
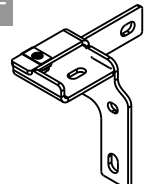
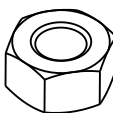


**K031PR  
K031CR**









**Santantônio K3 | Ranger 24**

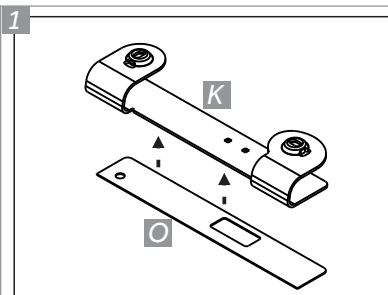
ITEM	QUANTIDADE	DESCRIÇÃO
A	02	<b>Pf. Sext. Int. Cab. Abau. M6x1,00x25</b>
B	04	<b>Pf. Sext. M12x1,25x25</b>
C	10	<b>Pf. Sext. M8x1,25x25</b>
D	04	<b>Arruela Lisa M12x2,5x24</b>
E	02	<b>Arruela Lisa M6x1,6x14</b>
F	10	<b>Arruela Lisa M8x17</b>
G	01	<b>Grade de Vidro</b>
H	04	<b>Arruela Plástica Dianteira</b>
I	02	<b>Arruela Plástica Traseira</b>
J	01	<b>Base Direita</b>
K	01	<b>Base Esquerda</b>
L	01	<b>Conjunto Capa Lateral Direita</b>
M	01	<b>Conjunto Capa Lateral Esquerda</b>
N	01	<b>Contorno Dianteiro</b>
O	02	<b>Fita Espuma Direita/Esquerda</b>
P	04	<b>Pf. Francês. M8x50x1,25 RT GPR</b>
Q	02	<b>Tampa Plástica parafuso</b>
R	02	<b>Suporte de Fixação traseiro</b>
S	01	<b>Suporte lado direito</b>
T	01	<b>Suporte lado esquerdo</b>
U	04	<b>Porca Sext. M8 X 1,25 ZNPT</b>

**PARTES INCLUSAS**

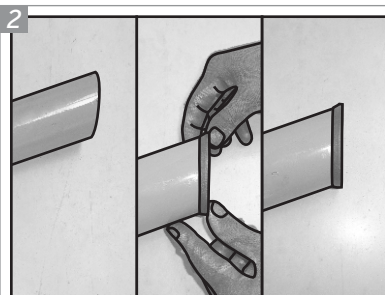
<b>A</b> 	<b>B</b> 	<b>C</b> 	<b>D</b> 	<b>E</b> 	<b>F</b> 
<b>G</b> 	<b>H</b> 	<b>I</b> 	<b>J</b> 	<b>K</b> 	<b>L</b> 
<b>M</b> 	<b>N</b> 	<b>O</b> 	<b>P</b> 	<b>Q</b> 	<b>R</b> 
<b>S</b> 	<b>T</b> 	<b>U</b> 			

**FERRAMENTAS**

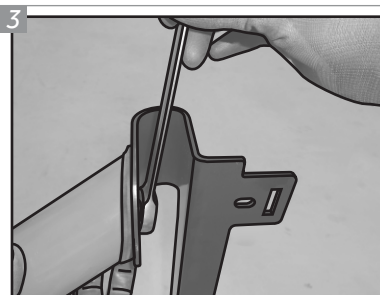
 Primer Anticorrosivo	 Chave Allen 4	 Chave 13 e 19 catraca	 Torquimetro com soquete 13 e 19	 Chave Phillips	 Furadeira	 Brocas 3,5mm
 Craft Knife						



1 Retirar liner das fitas espumas "O", colar na base direita "K" na região de contato com a caçamba. Repita o procedimento para a base esquerda "J".

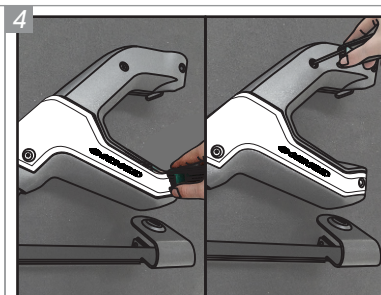


2 Posicione uma Arruela Plástica Traseira "L" na extremidade do Conjunto Capa Lateral Direita "O". Repita para o Conjunto Capa Lateral Esquerda "P".

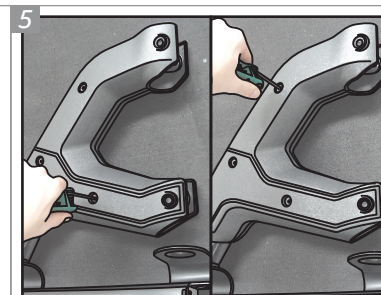


3 Com a ajuda de um Parafuso "B" e uma Arruela "F", fixe o Conjunto Capa Lateral Direita "O" na base "M". Repita o procedimento para o lado esquerdo. Não dê o aperto final.

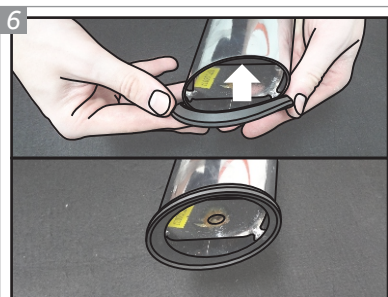
**IMPORTANTE:** Se a montagem do Contorno na Base não for possível, siga os passos de auxílio. Em seguida, volte para a etapa 4 e prossiga.



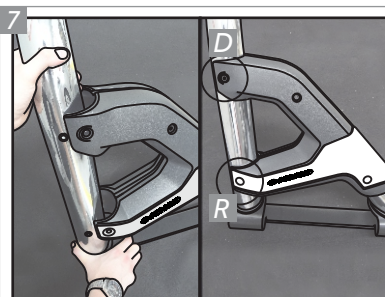
4 Separe o Conjunto Capa Lateral Direita "O". Afrouxe os parafusos que prendem a tampa externa. Repita para o Conjunto Esquerdo "P".



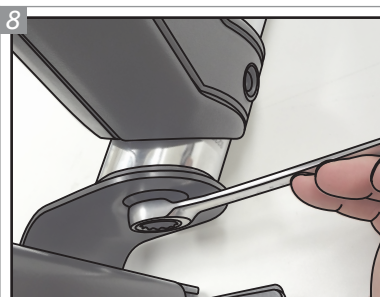
5 Afrouxe os parafusos que fixam a tampa interna dos Conjuntos de Capas Laterais "O" e "P".



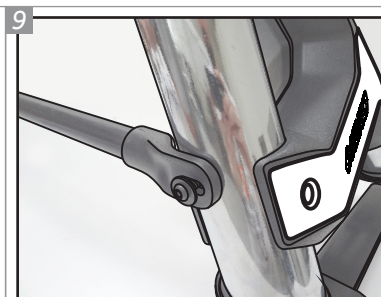
6 Posicione as Arruelas Frontais de Plástico "K" nas extremidades do Contorno Dianteiro "Q".



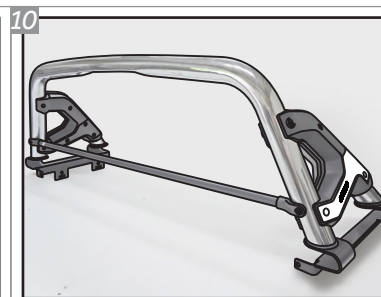
7 Encaixe o Contorno Frontal "Q" nos Conjuntos de Capa Lateral "O" e "P" e fixe-os com o auxílio dos Parafusos "D" na parte superior e inferior, mas utilize os Parafusos "R" na parte inferior da tampa externa.



8 Para a fixação do Contorno Dianteiro às bases dos Conjuntos de Capas Laterais, utilize Parafusos "B" e Arruelas "F", sem dar o aperto final.

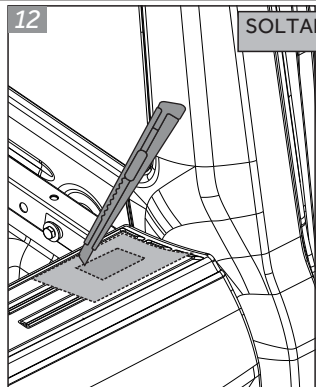
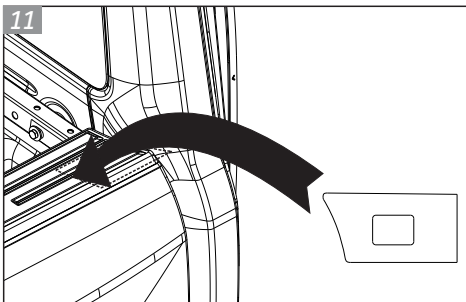


9 Posicione a Grade de Vidro "J", com as extremidades nos orifícios correspondentes, no Contorno Frontal, fixando-a com Parafusos "A" e Arruelas "G".

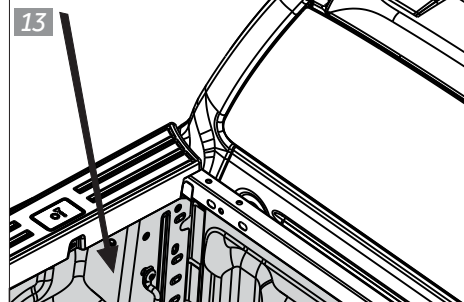


10 Seu Santantonio K3 deve estar como na imagem acima. Coloque o acessório no veículo e ajuste as bases na caçamba e dê aperto às fixações previamente soltas.

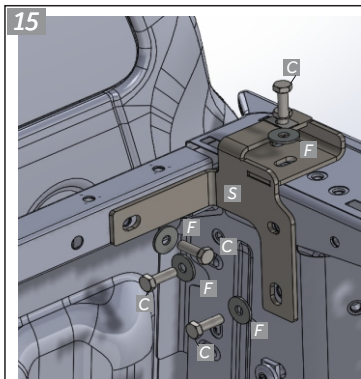
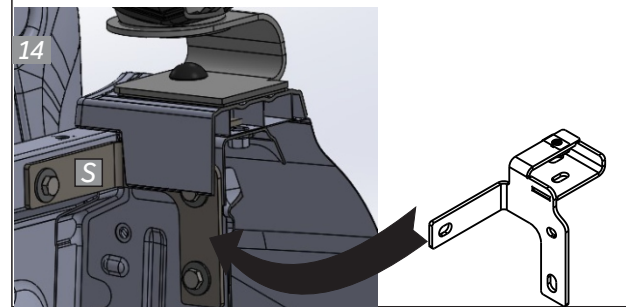
MARCAR E RECORTAR, GABARITO ANEXO



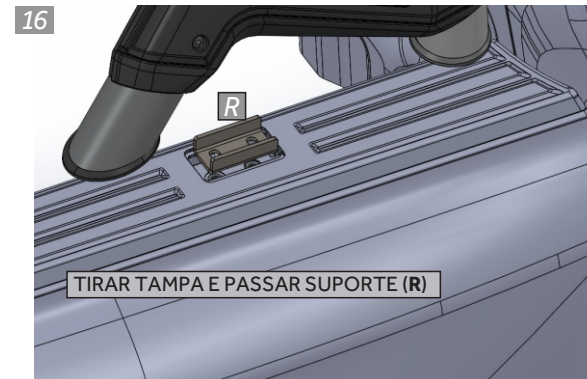
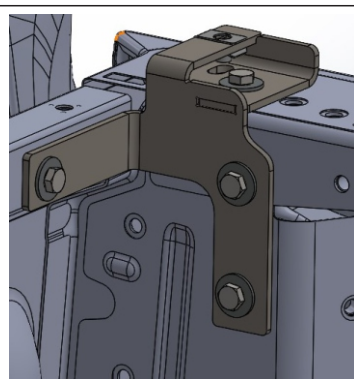
SOLTAR O ACABAMENTO DE PROTEÇÃO PLÁSTICO DA CAÇAMBA



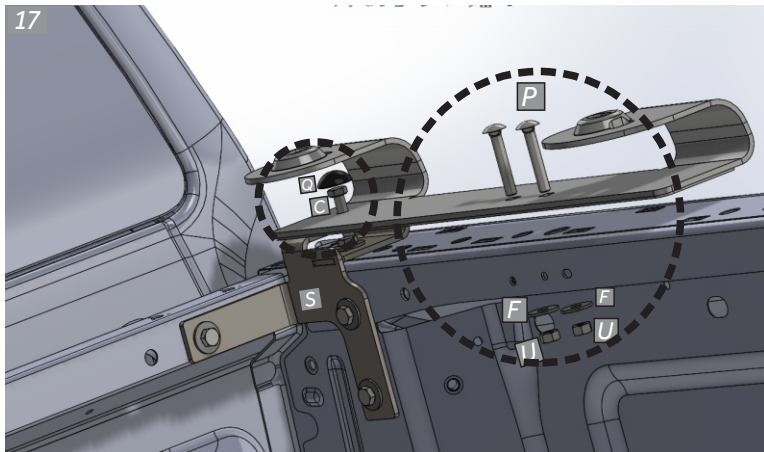
PASSAR SUPORTE POR BAIXO DO ACABAMENTO



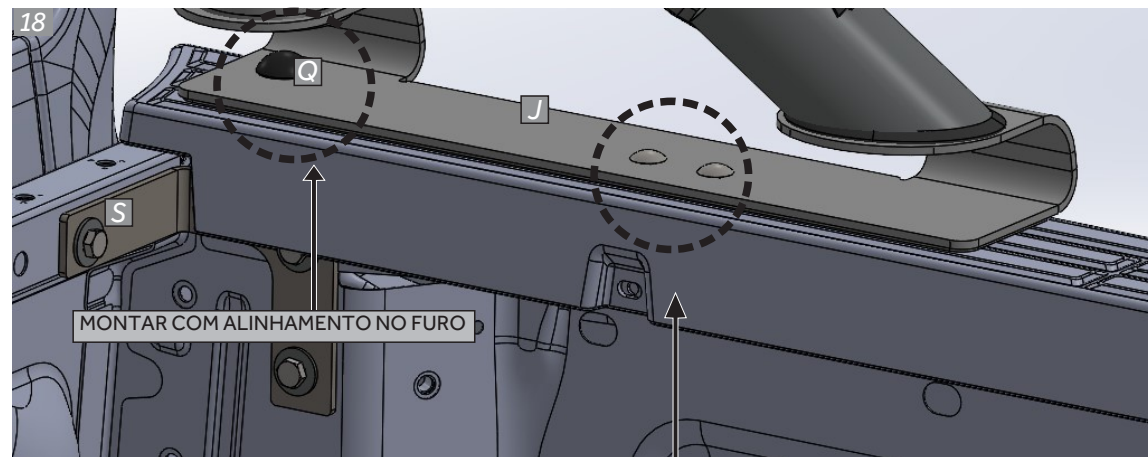
Montar suporte S e T utilizando para a fixação os parafusos C e arruelas F.



TIRAR TAMPA E PASSAR SUPORTE (R)



MONTAR COMPONENTES PELA PARTE DE BAIXO



MONTAR COM ALINHAMENTO NO FURO

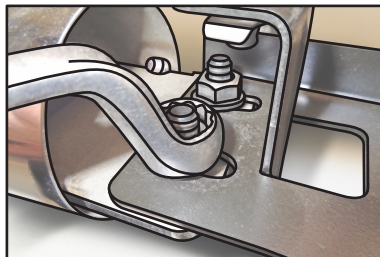
ALINHAR A BASE DE FORMA QUE A FURAÇÃO DA BASE ENCAIXE COM A FURAÇÃO

1A PASSO AUXILIARES



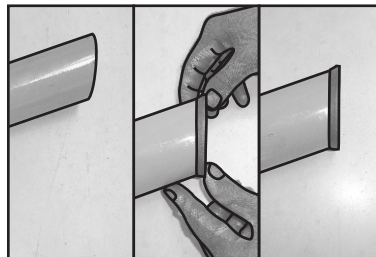
Remova as tampas do Conjunto de Capa Lateral Direita "O".

2A



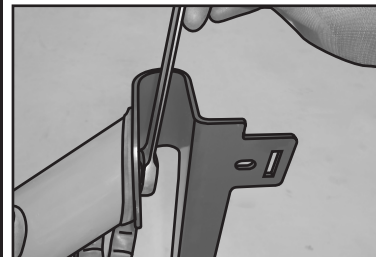
Solte as duas porcas, com parafusos franceses, que prendem a estrutura interna ao tubo, para que você possa ajustar o tubo com a Base Direita "M".

3A



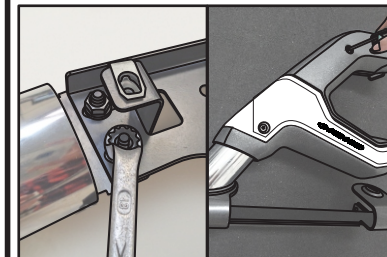
Posicione uma Arruela Plástica Traseira "L" na extremidade do tubo do Conjunto Capa Lateral Direita "O".

4A



Com o auxílio de um Parafuso "B" e de uma Arruela "F", fixe o Conjunto Capa Lateral Direita "O" na Base Direita "M", sem dar o aperto final.

5A



Aperta as duas porcas, previamente liberadas, na estrutura interna da Tampa. Em seguida, reposicione as tampas plásticas com seus parafusos, sem dar o aperto final. Repita os passos 1A-5A para o lado esquerdo.



## CONDIÇÕES DE GARANTIA

**Keko Acessórios S.A.** concede ao comprador original dos produtos Keko garantia de três anos a partir da data da compra original por defeito de fabricação em matéria-prima, mão-de-obra ou acabamento, em serviço ou uso normal, sendo devidamente comprovados. Excluem a garantia danos ocasionados por colisões, uso indevido do produto como sobrecarga, limpeza incorreta, instalação inadequada, alteração da concepção original do produto ou nº de série (disponível no produto e na embalagem) de fabricação removido.

**Conservação, limpeza e durabilidade:** para limpeza utilizar somente água, sabão neutro, esponja ou flanela. Para conservação de produtos com acabamento cromo utilizar periodicamente cera automotiva. Nunca utilizar produtos químicos ou abrasivos, dado que seus componentes riscam o acabamento e expõe à corrosão os produtos com acabamento em cromo e danificam os produtos em plástico.

**Solicitação da garantia:** solicitar à loja em que foi efetuada a compra a avaliação do problema. Em caso de reclamação procedente, a peça será substituída sem ônus ao proprietário. O conserto ou substituição das partes do equipamento não ocasionará prolongamento do prazo de garantia estabelecido para o mesmo.

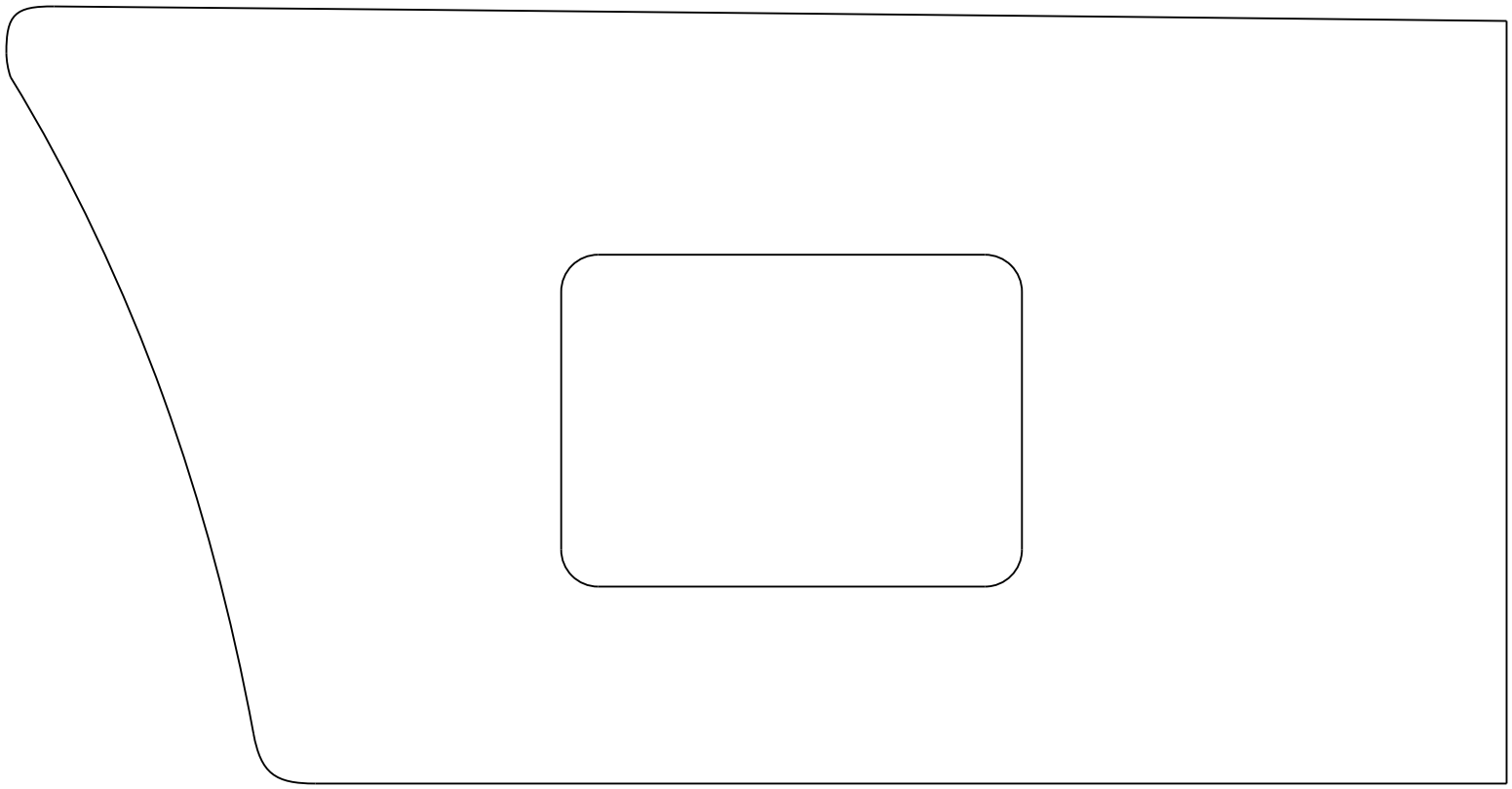
**Termo de responsabilidade dos produtos Keko:** a Keko não assume qualquer responsabilidade em virtude de ocorrências de qualquer natureza, decorrentes da má utilização/instalação dos seus produtos. Após a utilização do produto/embalagem recomendamos a correta destinação para cada tipo de material conforme lei vigente.

**Os produtos Keko são comercializados como acessórios meramente decorativos e não devem ser considerados como medida de proteção para o veículo ou passageiros em casos de colisão ou capotagem.**



MARCAR E RECORTAR, GABARITO ANEXO  
MARK AND CROP, TEMPLATE ATTACHED  
MARCAR Y RECORTAR, PLANTILLA ADJUNTA

INSTALLATION DESCRIPTION / Descripción de Instalación





MARCAR E RECORTAR, GABARITO ANEXO  
MARK AND CROP, TEMPLATE ATTACHED  
MARCAR Y RECORTAR, PLANTILLA ADJUNTA

